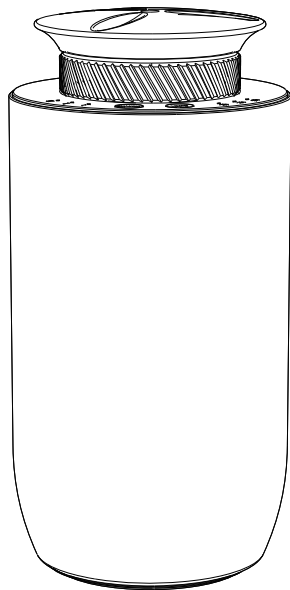


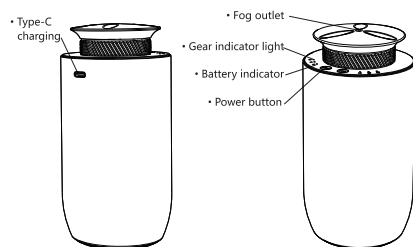
INSTRUCTION



Product Operation Manual

Parameters

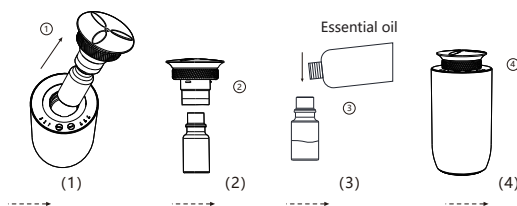
Size	φ70*H142(mm)
Capacity	10ml
N.W	0.337KG
Coverage	100m ³
Voltage	DC5V-1A
Power	2W
Noise	≤40dB
Package	W262*D131*H102(mm)



Accessories

Item	Power cable	User manual
Diagram		

Installation



1. Rotate the atomizer ① counterclockwise, lift up the atomizer and essential oil bottle, and take out the atomizer and essential oil bottle.
2. Hold the essential oil bottle and rotate it counterclockwise to take out the essential oil bottle to separate it from the atomizer, and fill it with essential oil (10ml, the upper limit). ②
3. Tighten the essential oil bottle containing the essential oil clockwise with the atomizer. ③
4. Put the essential oil bottle and the atomizer into the machine, and tighten it clockwise (no need to correct the direction). ④ Set working hours and start using the equipment.

Introduction

This device adopts all-metal appearance and plug-in knob design, which is easy to operate. The top cover is designed with helical teeth, with smooth lines, exquisite and durable appearance. With induction function, it emits fragrance along with the driving, and scenting in whole car quickly. It can be placed independently, and the aroma diffusion amount is accurate and stable. The main function is to create different scent styles for life, it is suitable for car, study, bedroom and other places.

Attentions

Please read this manual in detail before using the device and keep it carefully.

1. Please do not use overloaded power sockets, broken wire and charger. It may endanger your safety and cause a fire, please replace in time if it happens.
2. Please do not try to modify, disassemble or repair the device in order to avoid damage to the device, if you are not a technician. If the device is abnormal, please check whether it is operated normally according to the user manual, or check according to the Malfunction Debugging. If it cannot be solved, please contact seller timely.
3. Please do not invert or tilt the device when used. If the device needs to be transported to other sites, please maintain and clean the device (see Maintenance for details) first before package and transportation, in case of oil leakage to damage the device.
4. Please maintain and clean the device regularly to ensure the device in best working states.

Instruction of Essential Oil

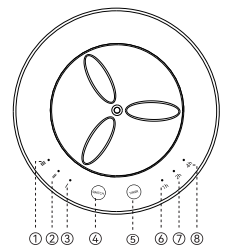
1. Before refill canister with essential oil, please turn off the device for 2 minutes till oil of atomizer back to canister then take off the oil canister.
2. It's recommended to control the amount of essential oil and run out within 45 days, in order to avoid the deterioration of essential oils by oxidation.

Precautions



Description of LCD display

- ① Third gear indicator light:
3rd gear works for 3s and pauses for 177s.
- ② Second gear indicator light:
2nd gear works for 8s and pauses for 172s.
- ③ First gear indicator light:
1st gear works for 15s and pauses for 165s.
- ④ Gear button:
To adjust the first, second and third gears.
- ⑤ Timer button:
Select timing: 1 hour, 2 hours, 4 hours.
- ⑥ Indicator light:
Timed for 1 hour.
- ⑦ Indicator light:
Timed for 2 hours.
- ⑧ Indicator light:
Timed for 4 hours.



Device status display:
charging: gear light cycle effect.
Full: Gear light is on. When the battery voltage is lower than 3.2V: Three indicator lights flash together and automatically turn off after five minutes.

Start and stop mode:

press the timing button until the three timing indicators light up at the same time to enter the start and stop mode; After entering the start and stop mode, the gear can be adjusted by itself, and the automatic induction can be carried out in a cycle of three minutes. You can also press the timing button until a single timing indicator lights up to exit the start-stop mode.

Tips

1. When using the device for the first time, please connect the adapter charging cable to the device to ensure that the battery is fully charged.
2. Long press the gear button for 1.5 seconds to switch the machine on/off.

Maintenance

- In order to ensure the best diffusing effect, please check and maintain the device every six month, or when you replace a new fragrance, or when the diffusing effect get weak as the following steps.
1. Unlock the door and take out oil canister which is spent.
 2. Filling industrial alcohol into the canister and clean it.
 3. After clean the oil canister, refill canister with little alcohol and install it on the device then make the device stay in working status for 5-8 minutes.
 4. Turn off the power when finishing cleaning.

Malfunction Debugging

Please try to solve the problem as below before fixing the machine.

Breakdown	Solution	Breakdown	Solution
Not working	<div>- Check if power adapter is DC5V-1A, and check if DC power interface is well-connected or not.</div> <div>- Check if device is not in work period.</div>	Oil leakage	<div>- Check if oil canister connects to atomizer closely.</div> <div>- Whether the sealing ring of atomizing head is deformed or damaged</div> <div>- Check if atomizer is damaged.</div>
No mist Mist gets weak	<div>- Check if air pump works or not, and if there is airflow from air outlet.</div> <div>- Check if atomizer core and oil tube is loose or blocked.</div> <div>- Whether the sealing ring of air nozzle is damaged or fallen off</div>	Abnormal noise	<div>- Check if air pump is loose, please fix it correctly.</div> <div>- Check if air pump is damaged, please replace a new one.</div>

After-sales Service

The equipment shall be guaranteed within one year from the date of sales and shipment, but the shell, power supply, cable, external sealing ring and other wearing parts are not guaranteed. The damage caused by human or accident is not covered by the warranty, and the paid maintenance shall be carried out beyond the free warranty period.

If there is any issue of after-sales, please contact authorized sales service in corresponding area, or contact Sales Center directly.

Warranty Card

This card is the warranty for device's quality, please fill it with actual information.

Warranty card one		Warranty card two	
Start Date of Warranty Period		Start Date of Warranty Period	
Malfunction Description		Malfunction Description	
Date of Verify		Date of Verify	
Maintenance Result		Maintenance Result	
Maintainer's Signature		Maintainer's Signature	