

Operation Tips

- 1. Please plug in, or confirm that the battery is fully charged.
- 2. Long press the ON/OFF button for 1.5 seconds to switch the machine ON and OFF.

Troubleshooting

Please follow the these ways to solve problems before preparing to repair the device.

Trouble	Solution	Trouble	Solution
Not work	-Check if the power adapter is 5V-1A or the Type-C port is right plug in. -Check if the working process of the product is currently in working hours.	Oil leak	- Check if the oil bottle is tightened with the atomizing head - Check if the seal ring of atomizing head is deformed or damaged - Check if the atomizing head is damaged.
No mist or less mist	-Check if the air pump is working or if there is airflow at the mist outlet. -Check if the sealing ring in the gas nozzle is damaged or falling off.	Abnormal noise	- Air pump is loose, reattach the air pump - If air pump is damaged, replace it with a new one.

Product Maintenance

To ensure the product in good condition, please check and maintain the product every six months. Please maintain this product when you want to replace a new essential oil or the diffuse effect is weakened.

Maintenance steps:

- 1. Take off the used essential oil bottle.
- 2. Pour appropriate alcohol into the bottle and clean it.
- 3. After cleaning, pour in a little alcohol into the bottle, install it on the device, turn on and work for 5 to 8 minutes.
- 4. When everything is done, turn off the power.

After-sales Service

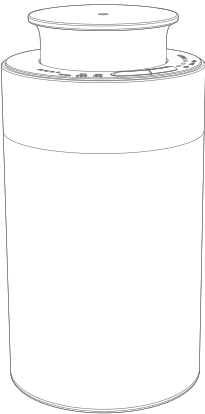
The device is guaranteed for one month from the date of shipment, but it does not guarantee the vulnerable parts such as shell, power supply, wire and outer sealing ring. Man-made or accidental damage does not belong to the scope of the warranty. Paid repairs are implemented beyond thewarranty period. If you have any after-sales questions, please contact the regional authorized sales service providers, or contact our sales center.

Warranty Card

This warranty card is for quality assurance. Please fill it out truthfully.

Warranty card ①		Warranty card ②	
Maintain date		Maintain date	
Fault description		Fault description	
Inspection time		Inspection time	
Maintain results		Maintain results	
Sign of repairman		Sign of repairman	

Product Instruction



Mini Aromatherapy Diffuser

Product Introduction

- Its body adopts high quality eco-friendly aluminum material. This is one-time molding with special technics, which is the first in the industry. After complex processing, the surface of its body presents a delicate frosted texture, looks low-key and luxurious.
- The product structure is well-designed, which makes the atomization fan-shaped. It atomizes the essential oil thoroughly, no residue, no effusion, uniform particles, and rapid diffusion.
- Newly designed PCB control interface, minimalist style, easy to operate, more convenient to use.

Notes

Please read this manual carefully before using the product and keep it properly.

- ⚠ Don't use overloaded power outlet, damaged power cable or adapter, or it may threatens your safety. To avoid potential fire danger, please replace it once found.
- ⚠ If you are not a technician, please don't try to revise, tear down or repair this product. Please check if you are following the right use steps when the product is abnormal and if you cannot solve the problem, please contact the seller in time.
- ⚠ Don't upside down or recline this product when it is working. If you need to transport it to another place, please maintain and clean the product first to avoid oil-leaking and damaging this product, (see product maintain details). Then you can package and transport this product.
- ⚠ Please maintain and clean the product regularly to ensure the best working condition.



Use safe power



Don't disassemble

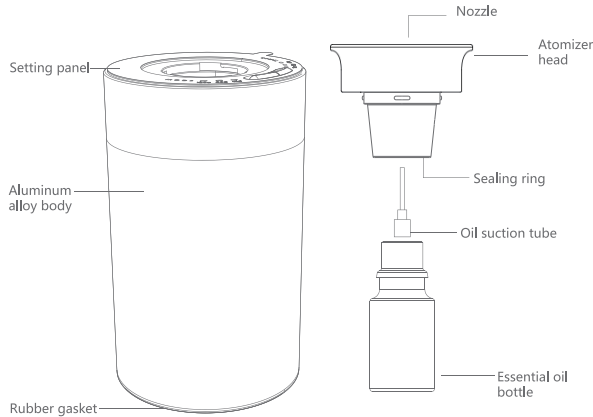


Keep it upright



Regular clean & maintain

Product Structure



Product parameter

Product size: $\phi 72 \times 138$ mm
Coverage: 100m³
Lithium battery: 2000mAh

Oil capacity : 5ml/10ml
Noise: ≤ 40 db
Packing size: 208*101*85mm
Net weight: 365g

Rated input: 5V-1A
Rated power (Li-Battery): 2W
Rated power (5V-1A): 6W

Setting Panel

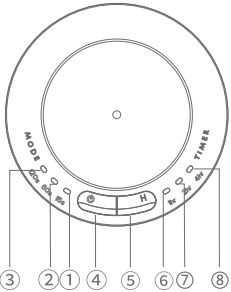
- ① Lowest mode indicator light: Atomize 15s, Pause 165s.
- ② Moderate mode indicator light: Atomize 60s, Pause 120s.
- ③ Strongest mode indicator light: Atomize 120s, Pause 60s.
- ④ ON/OFF button and adjust atomization modes.
- ⑤ Timing button: Set working time 1/2/4 hours.
- ⑥ Indicator light: Work for 1 hour.
- ⑦ Indicator light: Work for 2 hours.
- ⑧ Indicator light: Work for 4 hours.

*Status display:

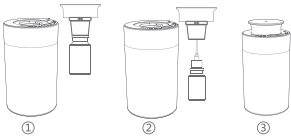
Charging: The mode indicator lights up circularly..

Fully charged: all mode indicator lights flashing.

Lack of power: ① mode indicator light flashing.



Installation Steps



- ① Rotate to take out the atomizer head.
- ② Rotate to take out the bottle and fill it with essential oil (oil-based).
- ③ Install the atomizer head and start setting.

Parts

Name	Instruction	Type-C cable	Essential oil dropper
Thumbnail	User manual		